



Dream Networks

— SINCE 2016 —

COMMUNITY
TAILORED
PLAY SPACES

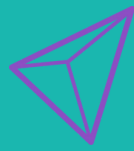
PLAY4ALL



**“The Plays of childhood are the
germinal leaves of all later life”**

Friedrich Froebel, Founder of Kindergarten





Dream Networks

We transform spaces into playful places for all

1. ABOUT US

2. OUR SERVICES

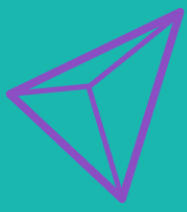
3. OUR APPROACH

4. OUR IMPACT

5. OUR VISION FOR THE FUTURE

6. OUR PROJECTS

7. CONTACT DETAILS



Dream Networks

Outdoor Places

Indoor Spaces

Social Responsibility

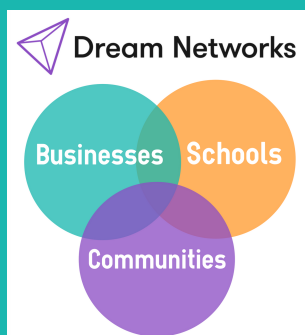
At Dream Networks C.I.C, we collaborate with businesses, schools, and communities to co-design and sustainably build creative, community-tailored play areas across the world. For people in schools, residential areas, shopping malls, offices, and public places.

We have provided play areas in schools, and commercial and public spaces that have been used by over 60,000 children. We are a UK-registered CIC social enterprise and all our play spaces have been approved by British and European EN1176 standards.

Through our Safe Haven and Love Plays programmes we provide design and build services to enable users to participate in the design of their own spaces and create play spaces that cater to the local needs and the environment. Our Love Plays co-design programme enables businesses to support the education and well-being of children in marginalised communities.

We sustainably build play spaces by working with local suppliers and contractors, who are able to produce play spaces that adopt our regenerative and nature-led design practices.

Based on our experience in providing high-quality, safe outdoor play spaces across the UK and East Africa, we have developed design models for indoor and commercial spaces.



Sustainable

Built with sustainable and regenerative design practises

Collaboration

Collaborating with businesses, school and communities to provide play spaces in residential, school, commercial and public spaces

Inclusive Experiences

Play spaces that cater for a variety of abilities, ages and interests

Why Play?



Play is a right for all children

and yet globally millions of children lack access to dedicated play areas



Children Grow and Innovate in Play

Fundamental Social interaction, creativity, resilience, emotional and cognitive skills are cultivated through play.



Improved experiences for all

Designing play spaces that cater for local needs and culture, while improving environmental quality

We are part of a global network of organisations that recognise the importance of play to children's lives and building a sustainable society.

We create play spaces that can rejuvenate land that has been unused. improving the environment through nature and transforming spaces that were previously unsafe, into welcoming places for play

We provide play spaces that have an economic value, public parks can increase the property value of residential properties immediately adjacent to parks by as much as 20% [1]. We work with local communities and businesses to provide work and improve aspirations through co-design.

We contribute to the 2030 sustainable development goals (SDG), our pillar goals are good health and wellbeing, reduced inequalities and sustainable cities and communities.



United Nations Sustainable Development Goals

[1]<https://www.lynchburgparksandrec.com/top-5-benefits-of-parks-and-recreation/>

Our Services

Design, Build, Experience

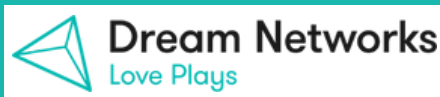
We provide design and build programmes to create outdoor and indoor play spaces for all. Our play spaces are sustainably built using nature-based and regenerative design practices. We create community-tailored play spaces that both children and adults love to experience

Dream Networks can manage both the design and build stages or both. We design our play spaces through our 2 flagship programmes. Safe Haven and Love Plays. We provide impact assessments for both the design workshops and the use of the play spaces.



Design tailored play spaces within residential, public or commercial spaces. Designed with input from existing or potential users during co-design workshops delivered by Dream Networks.

Client : Private and Public Regeneration projects, Public parks, Real Estate and Architects



Design tailored play spaces in an underutilised area within residential spaces or schools that are funded through Charitable investment. Young people are empowered to co-design a play space for their school or community in design workshops led by volunteering professionals. Volunteers also

Client : Business charity or corporate social responsibility, NGOs, Schools, Real Estate and Architects

Testimonials

'The play space has made our community more pleasurable and its great to see the children having fun ' - Local Resident

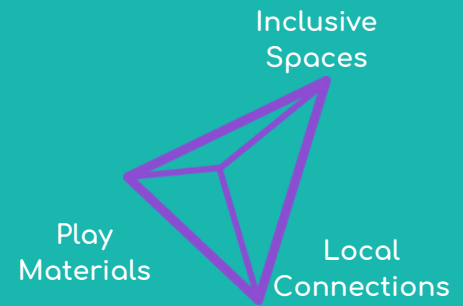
"The design workshops taught me how to develop and create things I didn't know I could' - 9 year old, UK

'Seeing their progression gives a sense of personal fulfilment which is different to meeting any deadline in the office. Volunteering professional

'Children of all ages are able to engage with their environment'.-Teacher

Sustainable Places
Community Tailored
Play for all

Our Approach



We collaborate to create play spaces that transform lives and environments.

We develop local connections to co-design spaces that consider how children interact with the environment and their behaviour patterns.

Our co-design process is an inclusive and interactive approach that enables us to design community-tailored play spaces in residential, commercial, and educational spaces. We carefully what natural and local materials are available so that we can create resilient spaces.

Our interactive play spaces are inclusive. They bring people of different ages and backgrounds together and provide a place where they can develop themselves, feel connected to others, and thrive.

We believe a quality play space is not defined by the number of play equipment it contains but by the variety of play types. We co-design multi-sensory play areas with play materials that enable children to engage in various types of play. Our play spaces enable children to develop physically, mentally, socially, and emotionally.

Benefits of Community Tailored Play

Commercial Spaces

- Better serve visitors' needs
- Playful and natural aesthetic
- Intergenerational play spaces that increase footfall
- Occupy empty units

Residential and Public Places

- Better serve communities' needs
- Nature-based play spaces
- Culturally appropriate play spaces
- More resilient spaces experienced by future generations



Community tailored



Business supported



Sustainably built



Creative play areas

Our Impact

Providing social, economic and environmental value

Improved wellbeing

designing inclusive play spaces that improve users health and wellbeing. Promoting a sense of belonging through co-design process

Economic opportunities

creating and nurturing STEM, creativity and communication skills in marginalised communities through our co-design workshops

Diverse supply chain

employing local artisans and builders to build play space and provide materials

Fighting climate change

adopting sustainable design principles and nature into our play spaces. Empowering young people to design sustainable spaces that address climate and spatial injustices

Volunteering

enabling local businesses to volunteer time and skills to support design workshops. Also group volunteer days during the build process. Improved integration between communities and businesses

100%

All Play areas designed with local children and community members

75%

Play areas built with natural or reused materials and regenerative design practises

65%

young people with increased interest in engineering, design and technology careers





A vision of the future

Places where play, nature and culture intertwine. Providing pleasurable experiences for all and community



AI generated by Dream Networks CIC

Our Projects

Play4All

We sustainably design creative play spaces for all children in multiple environments. We tailor our design and build services to match the project's scale, budget, and time availability.

Some of our projects are below and on pages 10-15.



Outdoor play spaces - Love Plays



Natural play space

Nature inspired play space



Outdoor natural playground for all ages

Underutilised space



Co-design



Sustainable materials



Play4All



SURREY SQUARE

LONDON, ENGLAND

Used by approx. 400 children over one year. Over 900 children in the school and the community over 5 years .

Play area that enables children to interact with others, learn through nature, and develop their gross motor skills and creativity. In Early Years provides space for outdoor learning. Both play spaces to account for special education needs.

Sustainably built with primarily locally sourced, recycled and natural materials.

Located in Walworth, High levels of child poverty and ethnically diverse community

- >Size 260 m2 Primary School, 110 m2 Early Years
- >Age range 3-11
- >Status Complete (Play Space opened in 2015)
- >Role Co-design workshop facilitation, Playspace design and construction management
- >Client Surrey Square Primary school

Before



Safe Haven Programme where play areas have been co-designed with the children in interactive design and sustainability workshops. Adults within the school community are trained to facilitate design workshops with children.

Design Tip

give people the freedom to design and play by choose malleable, flexible material instead of rigid and fixed pieces that limit creativity.

BARAA

ARUSHA, TANZANIA

Used by over 1000 children over 5 years
Play area that enables children to use their senses, socialise, role play and play traditional games. Special Education Needs Provision
Sustainably built by local craftsmen with primarily locally sourced materials
Located in Arusha, in a school playground open to the public on weekends.

- >Size 220 m²
- >Age range 2-16
- >Status Complete (Play Space opened in 2017)
- >Role Co-design workshop facilitation, Playspace design and construction management
- >Partners Atkins, Baraa



CSR funded Love Plays programme where play areas have been co-designed with the children in UK and Tanzania, where children in Tanzania were the clients. STEAM (Science, Technology, Engineering, Arts Mathematics) based design workshops with volunteers from Atkins

Design Tip

use technology to promote collaboration and feedback. This playground was designed with children 6,549 miles apart using emails and video calls.

CROWCROFT PARK

MANCHESTER

Used by approx. 220 children each year. Over 450 children over 5 years.

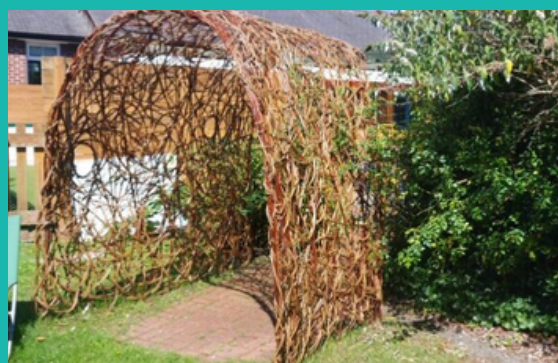
Play area that enables children to explore nature, relax, challenge their physical mobility, socialise and be creative.

Sustainably built with all natural or recycled materials

Located in Longsight, in an area of high economic deprivation and ethnically diverse community

- >Size 280 m²
- >Age range 5-11
- >Status Complete (Play Space opened in 2022)
- >Role Co-design workshop facilitation, Play space design and construction management
- >Client Tony Gee and Crowcroft Park Primary School

Before



CSR funded Love Plays programme where play areas have been co-designed with the children in STEAM (Science, Technology, Engineering, Arts Mathematics) based design workshops with volunteers from Tony Gee and Partners. Tony Gee and Partners Volunteers were trained to manage the build and took part in volunteer days where they cleared and decorated the play space.

Design Tip

do not underestimate the what your design team and partners can achieve when you work collaboratively and build mutual trust.

MOLO STREET PROJECT

KENYA

Used by approx 500 children over 5 years.

Play area that enables children to challenge their physical mobility, socialise, role play and play traditional games.

Sustainably built by local craftsmen with primarily locally sourced materials

Located in Molo, in an area of high economic deprivation

- >Size 190 m²
- >Age range 2-16
- >Status Complete (Play Space opened in 2018)
- >Role Co-design workshop facilitation, Play space design and construction management
- >Partners Atkins, Molo street project, Macualay Primary school, Lambeth Academy



CSR funded Love Plays programme where play areas have been co-designed with the children in UK and Kenya, where children in Kenya were the clients. STEAM (Science, Technology, Engineering, Arts Mathematics) based design workshops with volunteers from Atkins

Design Tip

Design does not have to generate something brand new, newness is not the aim. Instead focus on meeting the users and environments needs.

WILDPLACE ZOO

BRISTOL, ENGLAND

Used by over 40,000 children until zoo closed in 2022 and moved to another site

Nature-based play area with a Congolese theme. Intergenerational Play Space with diverse spaces to play.

Sustainably built with primarily locally sourced and natural materials, aspects of play area are powered by nature (water).

Located in public zoo.

- >Size 350 m2
- >Age range 3 upwards
- >Status Complete (Play Space opened in 2015)
- >Role Co-design workshop facilitation, Playspace design and construction management
- >Partners Atkins, Bristol Zoo and Gardens, local Bristol primary school



Love Plays programme where play areas have been co-designed with the children in STEAM (Science, Technology, Engineering, Arts Mathematics) based design workshops with volunteers from Atkins. Atkins Volunteers were trained to manage the build and took part in volunteer days where they cleared and decorated the play space.

Design Tip

keep looking outwards, inspiration can come from anywhere. The children's idea for an 8-leg social and competitive climbing frame came from a spider

GENERATIVE DESIGN

we develop designs based on best practices from across the world and use Artificial Intelligence generative design to provide clients and partners with multiple options for how to transform spaces through play.



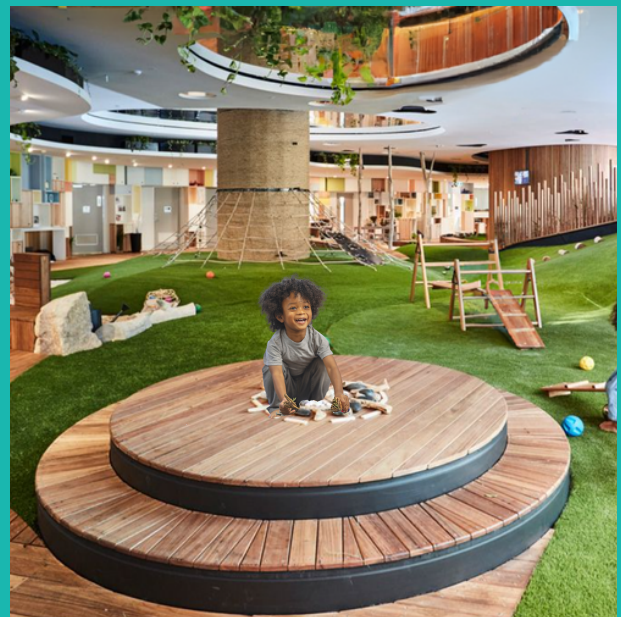
Outdoor natural playground for adults and children-AI generated by Dream Networks CIC



Outdoor play space in residential area AI generated by Dream Networks CIC



Indoor play space for adults and children AI generated by Dream Networks CIC



Natural indoor play space in retail unit AI generated by Dream Networks CIC



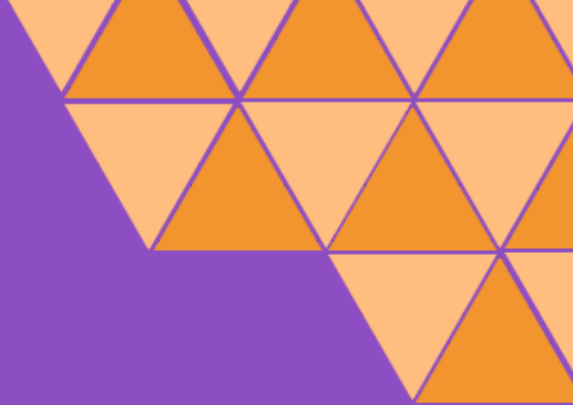
Outdoor race track in commercial space



Play street in urban area

Design Tip

Artificial Intelligence can be a partner to your design process, but like all partnerships recognise its boundaries. Take stock of the creativity and empathy you must bring to the partnership



let's have a conversation towards Play4All

contact us info@dreamnetworks.co.uk

 www.dreamnetworks.co.uk

 [dreamnetworks_play4all](https://www.instagram.com/dreamnetworks_play4all)

 [@DNloveplays](https://twitter.com/DNloveplays)

